



"威力仕"压铸机
WELLISH SERIES DIE-CASTING
MACHINE



"威力仕"注塑机
WELLISH INJECTION MOLDING
MACHINE



"澳瑪特"高精冲床
「機械冲床&液壓冲床」
AOMATE HIGH PRECISION PRESS
Mechanical press & hydraulic press

威力仕公司销售部
WELLISH Marketing Department
电话Tel: 86+574 86113970
E-mail: michelle@wellish.cn sales@wellish.cn
Mobile: 0086 13967807575
What's App: 0086 13967807575
http://www.wellish.cn

澳玛特公司销售部
AOMATE Marketing Department
电话Tel: 86+574 86113500
E-mail: sales03@aomate.com.cn
Mobile: 0086 13967807575
What's App: 0086 13967807575
http://www.aomate.com.cn



WELLISH

die-casting machine

威力仕 | 精密压铸机床



300-16800KN

中外合资宁波威力仕高科机械有限公司 NINGBO WELLISH HI-TECH MACHINERY CO.,LTD. WELLISH INDUSTRIAL GROUP LIMITED

地址: 宁波北仑沿山河北路58-66号海龙工业园/A区 (原: 海太高科机械有限公司)
Add: Area A, No.58-66 North Yanshanhe Road, Beilun, Ningbo, 315800, China

欢迎经销/代销 Welcome to be our agents / dealers

电话 (Tel): +86 574 86113970 手机 (Mobile): +86 139 6780 7575
邮箱 (Email): michelle@wellish.cn sales@wellish.cn
网址 (Website): www.wellish.cn 全国咨询服务热线: 4001-020266

本公司常年法律顧問浙江海泰律師事務所

鄭重聲明: 本公司產品樣本中詞組與圖集所涉版面不得仿效、抄襲, 違者必究。

NO.2019-01版

威力仕高科机械有限公司 / WELLISH HI-TECH MACHINERY CO.,LTD. / www.wellish.cn

WELLISH INDUSTRIAL GROUP LIMITED



WELLISH公司

中外合资宁波威力仕高科机械有限公司长期来从事压铸机的研发&制造，公司总部位于中国一级开发区——宁波经济技术开发区（北仑），面积6万多平方米，厂区外设有机械加工分厂和总部精加工车间、总装车间。建立有企业工程技术中心、压铸机事业部研发实验室、实行PDM程序化设计、ERP管理系统、零件加工的CAM制造加工等信息化工程，公司通过ISO质量管理体系认证和产品——欧盟CE认证。“威力仕”压铸机凭借国外先进专业技术及具备高端检测器具及理化测验等手段，实现品质保证。

“威力仕”多款系列精密压铸机、以精为誉、以诚为本、铭求品质、竭诚服务，与客户共创卓越。

Company Profile

NINGBO WELLISH HI-TECH MACHINERY CO.,LTD. deals with the research and manufacture of high-end die casting machine for many years. Headquarter is located in Ningbo Economic & Technical Development Zone(Beilun) which is the primary development zone in China. Our company covers more than 60000m², and we have established the machining factory, headquarter finishing workshop as well as assembly workshop. Besides, we have also built enterprise engineering technology center, die casting machine division R&D laboratory. We have carried out the PDM program design, ERP administration system and information engineering such as CAM manufacturing of parts processing etc. Our company is qualified with ISO quality management system certification as well as European CE certification. We have combined with foreign advanced professional technology, high end testing equipment as well as physical and chemical testing method so to ensure good quality of WELLISH die casting machine.

WELLISH series high precision die casting machine always adheres to the principle of precision-oriented, honesty-oriented, quality-oriented as well as dedicated&sincere service and pursue excellence and create a brilliant future with our customers.

海纳百川 旭日东升



CREATE EXCELLENCE JOINTLY

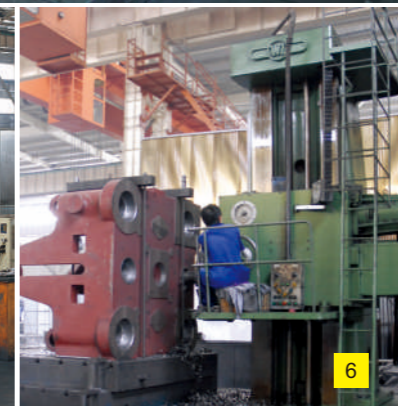
制造集锦

MANUFACTURING HIGHLIGHTS



工欲善其事——必先利其器

Good tools are prerequisite to the successful execution of a good job



1 — 2 总装二车间一角

A corner of assembly workshop No.2

3 — 10 CAM制造加工

CAM manufacture process

WELLISH PRECISION DIE CASTING MACHINE

— DISTINGUISHED, LEADING, TOP QUALITY, HIGH EFFICIENCY

威力仕精密壓鑄機——獨特、領先、優質、高效



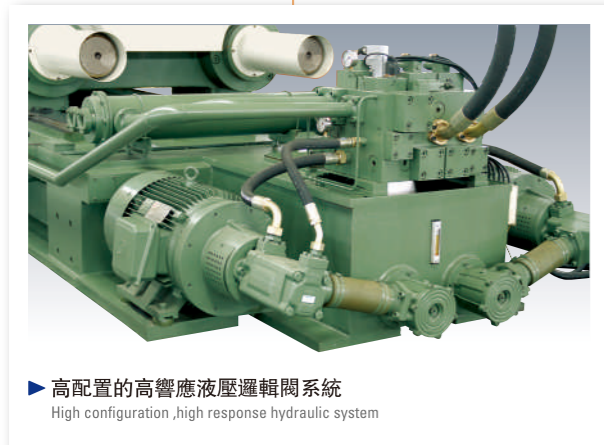
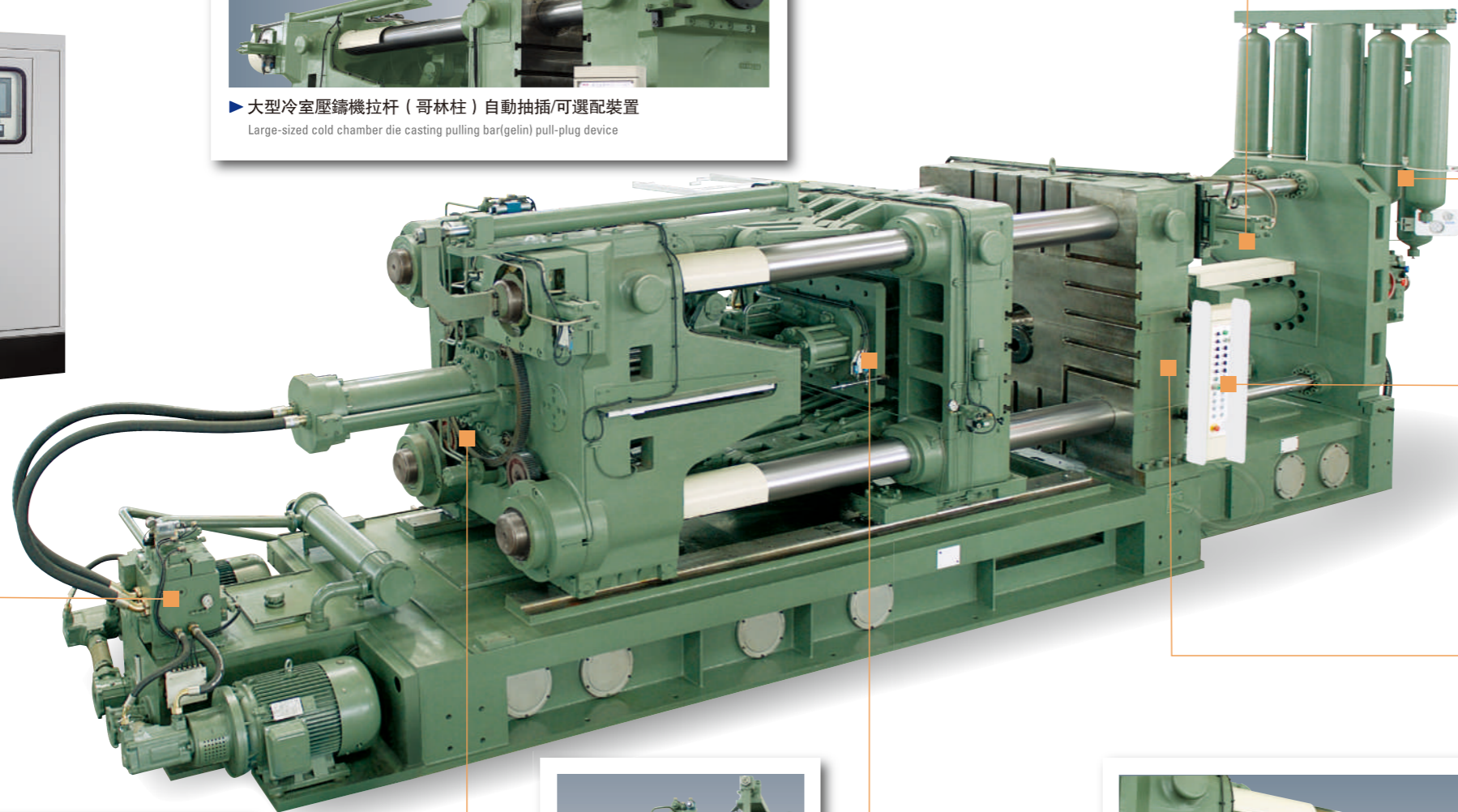
▶ 大型冷室壓鑄機拉杆（哥林柱）自動抽插/可選配置
Large-sized cold chamber die casting pulling bar(gelin) pull-plug device



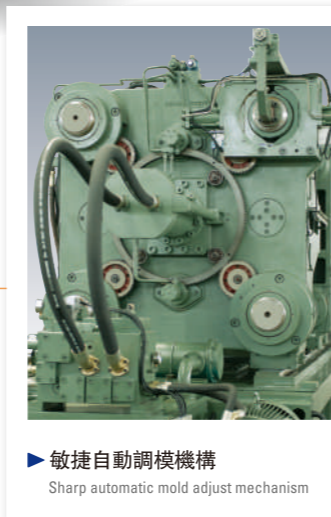
▶ 高端壓鑄成型領先技術、超高速壓射裝置
Up-to-date die casting molding technology ,high-speed press-injection device



▶ 進口高檔工業控制器——屏顯檢測控制系統
Imported high-class industrial controller—screen display test-control system



▶ 高配置的高響應液壓邏輯閥系統
High configuration ,high response hydraulic system



▶ 敏捷自動調模機構
Sharp automatic mold adjust mechanism



▶ 曲肘式斜排五支點鎖模機構
Toggle five-point support mold clamping mechanism



▶ 高剛性球墨合金模板
High rigidity nodular alloy mold platen

SELF INNOVATION & ENERGY - SAVING DEVICE

自主創新·節能設備

威力仕倡導壓鑄機——變頻&伺服驅動節能系統技術

WELLISH special recommendation die casting machine-frequency-conversion & servo drive energy-saving system technology

珍惜能源倡導節能已是當今全球化共同的追尋，威力仕根據壓鑄機生產工藝特性而研制推出高效/強力節能系統的機型。並將高節能技術&機器性能科學地融合——讓客戶實現無與倫比的使用價值。

Cherish energy resource and advocate energy-saving is the common seeking target of globalization today. WELLISH company have developed the die casting machine with high efficiency/powerful energy-saving system based on its characteristic of manufacturing technique. With scientific fusion of high energy-saving technology and machine features, so to achieve incomparable use value of our machine.

CA&MA系列冷室壓鑄機——變頻驅動高效節能型特性:

CA&MA series cold chamber die casting machine-frequency conversion drive high efficiency energy-saving characteristic

↑ 高效節能
ENERGY-EFFICIENT
↑ >35%

▶ 自主專用模塊技術的驅動器+控制器專用程序+專用電機+高性能油泵優化合成的電液控制系統。

▶ Special drive of autonomous module technology+specific program on controller+special computer+high performance oil pump optimized electric hydraulic control system

▶ 系統壓力/流量控制技術--能根據機器動作負載感應比例補償的自動匹配，且無高壓溢流的能量損失，並能有效抑制油溫上升，有效確保壓鑄成型的品質穩定並增加機器使用壽命。

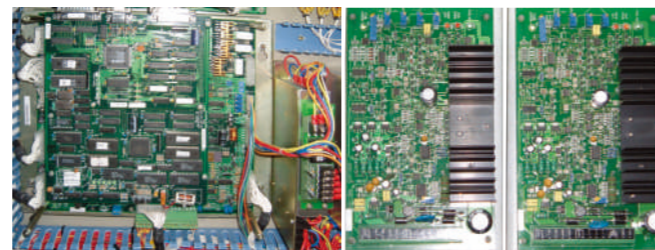
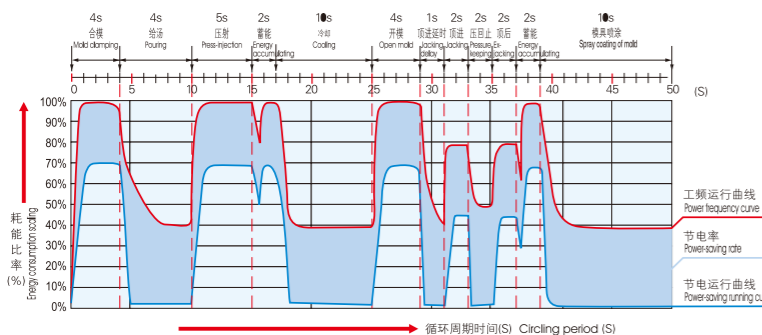
▶ System pressure / flow control technology, which can do automatic matching based on machine action load sensing proportional compensation, and no energy loss of high pressure overflow, which can effectively suppress oil temperature rise, ensure the stable quality of die-casting process as well as increase machine lifetime accordingly;

▶ 系統具有根據成型工藝需求設定無級轉速或選擇馬達自行運轉狀態至自行軟啟動循環功能，且不影響製品的生產的周期。CA·MA系列高效節能型的壓鑄成型耗電要比常規機器通常節能>35%。

▶ The system has the function that can set stepless speed according to the molding process demand or select the motor self-running state to the self soft restart, and it does not affect the production cycle time of the final product. CA·MA series high efficiency energy-saving type die casting machine can reduce the power consumption more than 35% compared to the standard machine.

CA&MA系列冷室壓鑄機節能效果曲綫圖 / 系統元件

The curve analysis chart of power saving result of CA·MA Series cold chamber die casting machine /elements and parts of system



CJ&MJ系列壓鑄機伺服驅動超強節能型特性:

CJ&MJ series die casting machine servo drive super energy-saving characteristic

↑ 超強節能
SUPER ENERGY EFFICIENT
↑ >60%

▶ 由本公司中外合資專業技術人員創新研發的專用高端模塊技術伺服驅動器+伺服馬達+控制器專用程序軟件+特種高性能泵浦優化組成的高響應電液伺服實現控制系統。

▶ Co-operatively developed by the experts, the driver of the up-to-date mold board technology+servo motor+special program software for controller use+ servo control system of high response electro-hydraulic comprised of specially made high performance oil pump.

▶ 系統實現壓力/流量閉環控制技術，實現動作的重複定位高精度，伺服驅動輸出匹配功率可按控制器設定的工藝參數指令而高速響應，並能有效抑制油溫，更能確保壓鑄成型的品質和增加機器使用壽命。

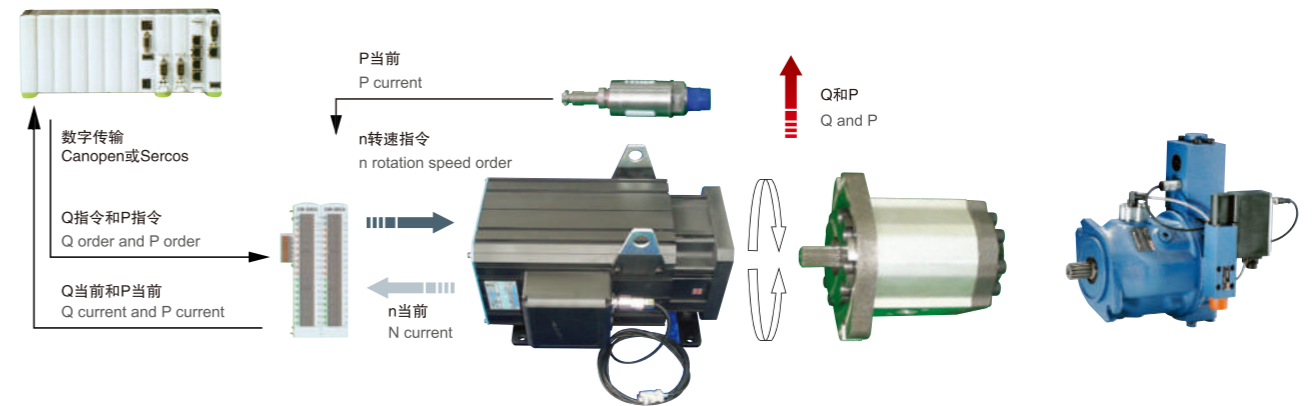
▶ The system carries out pressure-flow closed-loop control technology, guarantee the high accuracy for repeating positioning of the motions, the servo driver output matching power will be responded quickly according to the technical parameter order set by controller. And can control oil temperature effectively, keep top quality of castings and increase machine using period.

▶ 系統能自然地根據成型工藝要求設定階段性超低速且保持壓力的優點，且不影響製品生產周期的產能。CJ·MJ系列超強節能型壓鑄機耗電要比常規機器通常節能>60%。

▶ The system can set the staged ultra-low speed and maintain the pressure according to the molding process requirements, and it does not effect the cycle time of the product as well as production capacity. CJ·MJ series powerful energy-saving die casting machine can reduce power consumption more than 60% compared to the standard machine.

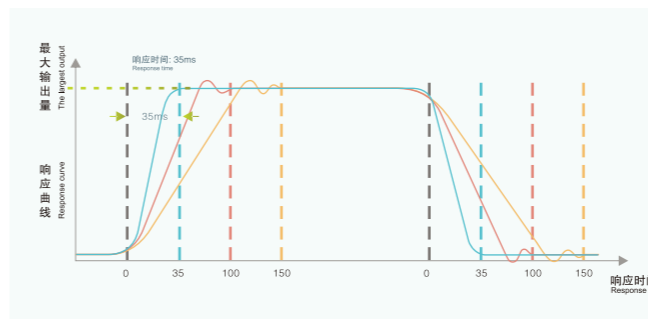
如：伺服馬達驅動雙容積變量泵——是最具性價比的機能系統

For example: servo motor driven biproduct variable displacement pump—the most cost-effective function system



系統高速響應比照

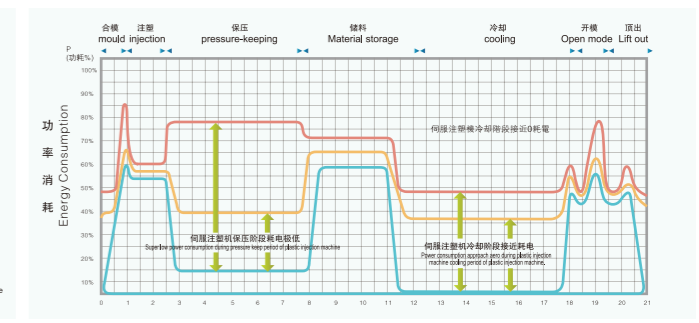
The comparison of systemic high speed response



— 定速馬達定量泵驅動 Fixed-speed motor-driven dosing pump — 定速馬達變量泵驅動 Variable speed motor driven pump — 伺服馬達定量泵驅動 Quantitative servo motor driven pump

系統功率消耗比照

The comparison of systemic power consumption



— 定速馬達定量泵驅動 Fixed-speed motor-driven dosing pump — 定速馬達變量泵驅動 Variable speed motor driven pump — 伺服馬達定量泵驅動 Quantitative servo motor driven pump

THE TECHNICAL STUDY OF DIE CASTING FORMING

壓鑄成型工藝探索

- ▶ 一般來說，鋁合金充型時間0.03~0.15秒為宜。充型時間受澆口面積、排氣槽大小、合金種類以及澆注溫度、衝頭速度、鑄造壓強的影響，需對這些進行控制。
- ▶ 儲能器內的壓力對於壓射壓力有重大的影響，所以，當氣體量一減少，充型的最後壓力也會大大降低，影響鑄件質量。如果壓射衝頭壓射一次儲能器內部壓強降低10%以上，則需要補充氣體。
- ▶ 當壓射完成在型內冷凝的時間過長，由于凝固收縮力而形成的抱型力就會加大，鑄件難以頂出。生產薄壁件時，很容易頂壞產品。時間太短，又容易凝固不好，造成鑄件變形。因此，壓射後要盡快達到取件溫度，就需要很好地冷卻壓型，為此還希望澆注量和澆注溫度的穩定。

- ▶ 應根據不同的產品，控制澆注溫度并實現標準化，壓型設計時，為使它溫度分布均勻，設有冷卻水路和集渣槽，但總會有些溫度差。壓型溫度的管理，通常是控制壓型表面的幾個點，其溫度不是整個壓型的溫度，統一用合型之前的溫度來控制也行，Al合金時，是150~300℃，Zn合金時，為150~220℃.另外，動型與定型的溫度差要盡量小。
- ▶ 離型劑要根據鑄件要求進行選擇，要噴塗適當濃度。使用時要噴施最少的量而且要噴塗均勻。重點噴塗冷卻進料口周圍及產品壁厚區域。活動芯子、頂杆、回程銷等的滑動部分和壓射室、衝頭上潤滑劑須塗抹適量。太多的話，會混入金屬液，進入型腔，導致鑄造缺陷。

CK&MK系列冷室壓鑄機
Cold chamber die casting machine



Note: ① the picture is for reference only, may be different from the actual

HK系列熱室壓鑄機
Hot chamber die casting machine



② please contact us when you want to buy the machine with European CE standard

提示：①資料中產品圖僅供參考，可能與實際出售物偶有不同

②當您欲購具備歐盟CE標準的機器、請與我們闡明

- ▶ In general for aluminum alloy, the reasonable mold filling time are 0.03---0.15 second. The mold filling time are affected by the area of pouring head, gas exhausting slot, kind of alloy, speed of punch head, pressure intensity of casting, it need to control these elements.
- ▶ The internal pressure of accumulator has the big effectiveness to press-injection pressure, therefore the lasting pressure will be reduce in large scale after mold filling which affect the casting quality. It need to recharge gas if the internal pressure intensity has reduced more than 10% after the punch press-injection once time.
- ▶ If the condensation in mold with too long time after press-injection, due to the condensation the sharp adhering force will be increased so it is difficulty for casting lift out. It is easy to turn out defective products during lift out when it produce thin-wall product. So to the target of as quickly as possible to arrive to the casting taking-out temperature, must do well for cooling profiling, and also must keep the stable pouring quantity and pouring temperature.

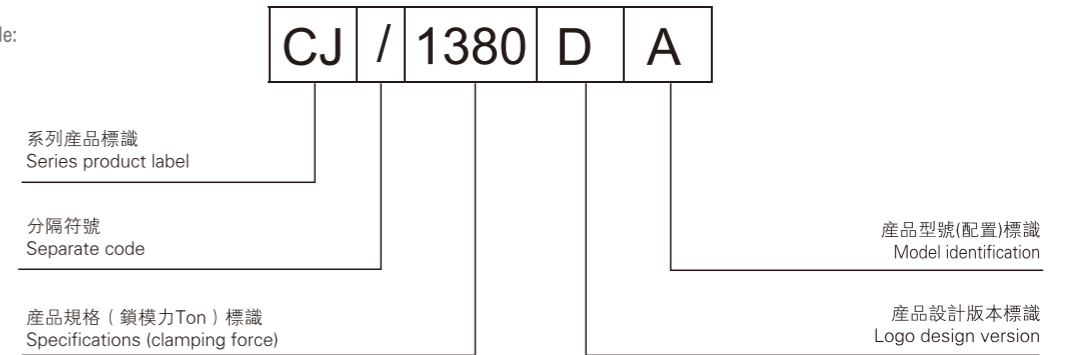
- ▶ It must carry out standardization on pouring temperature control according various products, for the purpose of temperature even distributing when design the profiling, though have cooling water route and residue slot, but still have some different temperature. For the profiling temperature management, in general it controls some points on surface, which temperature is not the whole profiling temperature, it is available use the temperature before mold clamping, for AL alloy is 150-300 ℃, for Zn alloy is 150-220℃ , in addition, the temperature difference between moving profiling and dead profiling must be as small as possible.
- ▶ The mold release selection must be according to the requirement of castings, must spray with reasonable concentration . the spraying key points cooling filling inlet and thick-wall area of products. It must spray evenly with minimum quantity. The movable core, ejector, stroke pin etc. moving parts and press-injection chamber, punch head, for lubrication quantity should be suitable. If too much, they will be mixed into metal liquid, and into the cavity to cause defective casting.

PRODUCT SPEC / TYPE IDENTIFIER

威力仕精密壓鑄機床系列產品規格 / 型號——標識認知

例如：

For example:



系列產品標識=機款標識+機能標識的組成

Product series label =style label +model label

機款標識 Machine Model Mark

- ▶ 機種款式標識C為：冷室壓鑄機床
- ▶ 機種款式標識M為：冷室鎂合金壓鑄機床
- ▶ 機種款式標識H為：熱室壓鑄機床
- ▶ Mark C: Cold chamber die casting machine
- ▶ Mark M: Cold chamber die casting machine for magnesium alloy
- ▶ Mark H: Hot chamber die casting machine

機能標識 Machine Function Mark

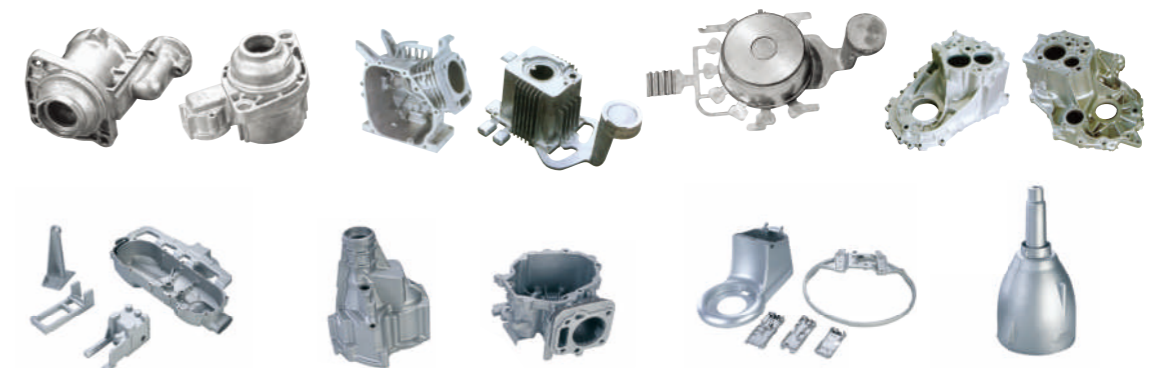
- ▶ 機能型式標識K為：常規標準型系統
- ▶ 機能型式標識A為：高效節能型系統
- ▶ 機能型式標識J為：強力節能型系統
- ▶ Mark K: Standard system
- ▶ Mark A: High efficiency energy-saving system
- ▶ Mark J: Powerful energy-saving system

產品型號標準配置資料垂詢

Please feel free to contact us if you would like to learn details about our machine configurations for each model / type

“威力仕”精密壓鑄機床廣泛應用於：航天航空、船舶汽車、電器電子、儀器儀表、醫療器械、五金用品等行業的鉛、鋅、銅、鋁、鎂等有色金屬產品壓鑄。

WELLISH precision die casting machine are widely used for lead, zinc, copper, aluminum, magnesium etc non-ferrous die casting in the industries of aviation & aerospace, ship & vehicles, electric and electronic appliances, instruments and meters, medical facilities, hardware's etc.



COLD CHAMBER & MG SERIES DIE CASTING MACHINE PARAMETERS

C&M 冷室壓鑄機 & 冷室鎂合金壓鑄機/規格參數

規格	Specification	Tons	C/140D	C/200D	C/300D	C/480D	C/580D	C/680D	C/880D	C/1080D	C/1380D	C/1680D	C/2080D
鎖模力	Clamping Force	KN	1400	2000	3000	4800	5800	6800	8800	10800	13800	16800	20800
開模行程	Open Stroke	mm	350	385	480	560	610	680	760	880	1000	1200	1400
模具厚度 (最小-最大)	Die-Thickness (Min-Max)	mm	200-500	200-580	250-680	300-700	320- 850	350-900	400-950	450-1150	450-1200	500-1400	650-1600
模板尺寸 (水平x垂直)	Platen Size(HxV)	mm	670x670	720x720	900x900	1010x1010	1150x 1150	1290-1290	1400x1400	1620x1660	1800x1800	2020x2020	2150x2150
拉杆內間距	Space Between Tie-Bars	mm	430x430	480x480	580x580	660x660	760x 760	860x860	910x910	1030x1030	1100x1100	1190x1190	1350x1350
拉杆直徑	Diameter of Tie Bars φ	mm	80	85	110	130	140	160	180	200	230	250	280
壓射力	Injection Force	kN	89-208	99-250	142-340	182-410	222- 559	240-622	253-680	865	440-1100	1290	1500
壓射行程	Injection Stroke	mm	335	370	440	550	580	640	760	800	945	980	960
壓射衝頭直徑	Injection Plunger Diameter	mm	40,50	50,60	50,60,70	60,70,80	70,80, 90	70,80,90	80,90,100	90-120	100-140	110-150	130-170
最大一次金屬 澆注量(鋁)	Max. Casting Volume (AL)	kg	0.8,1.2	1.3,1.9	1.6,2.2,3.1	2.7,3.6,4.5	4.1,5.4, 6.8	4.3,5.7,7.2	6.7,8.4,10.4	9.9,12,14.8,17.5	13-25	17-32	25-42
最大一次金屬 澆注量(鎂)	Max. Casting Volume (MG)	kg	0.5,0.8	0.8,1.1	1,1.5,2	1.6,2.2,2.9	2.6,3.5, 4.4	4.3,5.7,7.2	4.3,5.4,6.7	7.9-12.9	8.9-17.4	12.2-23	15.8-28
鑄造壓力 (小-大)	Casting Pressure (Min-Max)	Mpa	71-165.5 45.3-106	50.4-127.3 35-88.4	72.3-173 50-120 36.9-88.3	76-157 55.8-115.4 42.8-88.3	57.6- 145 44- 111 34.9- 87.9	73.5-158.5 56-121 44.5-95.9	50.3-123.7 39.8-97.7 32.2-79	76-136	71.4-140	73-135.7	66-113
鑄件投影面積	Casting Area	cm ²	83-305	141-700	162-759	255-934	344- 1433	397-1600	646-2484	735-2500	893-4371	1223-5866	1770-6000
壓射位置	Injection Position	mm	0,-100	0,-140	0,-160	0,-175	0,-230	0,-250	-140,-280	-150,-300	-160,-320	-175,-350	-175,-350
壓射頭推出距離	Plunger Penetration	mm	115	150	150	200	230	280	290	300	350	400	400
壓室法蘭直徑	Sleeve Flange Diameter φ	mm	110	110	110	130	130	165	180	240	240	260	260
壓室法蘭凸出 定型板高度	Sleeve Flange Protrusion	mm	10	10	12	15	15	15	20	20	25	25	30
頂出力	Ejector Force	kN	109	109	180	180	250	315	320	500	580	620	650
頂出行程	Ejector Stroke	mm	80	85	105	125	150	150	180	200	205	250	300
空循環周期	Dry Cycle Time	S	6	6	8	8	10	12	12	15	16	20	22
系統工作壓力	System Working Pressure	Mpa	16	16	16	16	16	16	16	16	16	16	16
電機功率	Motor Power	kW	11	15	18.5	22	30	37	37	45	2x37	2x45	2x55
油箱容量	Tank Capacity	L	450	595	850	900	1000	1000	1100	1900	2500	2600	3500
機器重量	Machine Weight	kg	6000	7800	12500	16500	24000	31000	39000	70000	98000	108000	135000
機器外形尺寸 (長x寬x高)	Overall Dimensions of Machine(L x W x H)	mm	5200x1265x2230	5510x1360x2530	6630x1640x2840	7200x1700x2950	8010x1985 x2940	8400x2100x3000	9960x2450x3330	10600x3500x3800	12000x3400x4000	12200x3000x4200	13700x4700x4900

說明：資料中規格參數如有變更，恕不另行通知。 / All Above Technical Parameters Are Subject To Change Without Prior Notice.

HOT CHAMBER SERIES DIE CASTING MACHINE PARAMETERS

H款(熱室)精密壓鑄機/規格參數

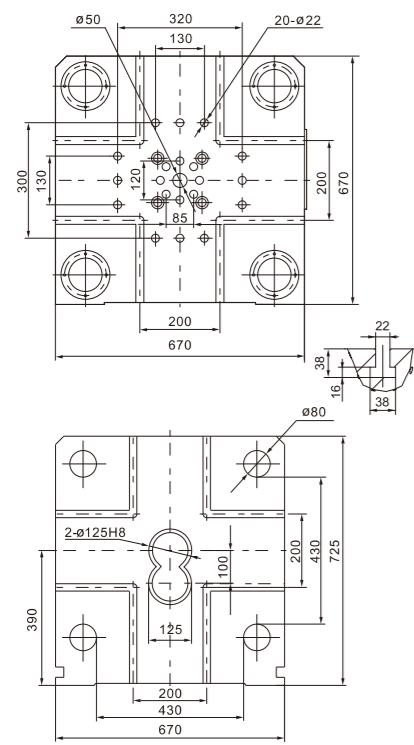
規格	Specification	Tons	H/30D	H/50D	H/90D	H/130D	H/160D	H/200D
鎖模力	Clamping Force	kN	300	500	900	1300	1600	2000
鎖模行程	Open stroke	mm	200	230	280	350	350	400
頂出力	Ejector Force	kN	35	50	60	88	108	108
頂出行程	Ejector stroke	mm	50	60	60	85	85	100
模具厚度(最小-最大)	Die-Thickness(Min-Max)	mm	120-320	120-340	120-360	170-450	205-505	250-550
拉杆內間距	Space Between Tie-Bars	mm	241x241	310x310	360x360	409x409	459x459	510x510
拉杆直徑	Diameter of Bars ϕ	mm	45	56	65	75	80	90
壓射位置	Injection Position	mm	0	0	0	0	0	0
壓射力	Injection Force	kN	35	65	88	108	108	130
壓射行程	Injection Stroke	mm	110	130	150	150	150	175
離嘴行程	Disengage Stroke	mm	200	192	200	200	200	200
最大澆注量 (鋅)	Injection Weight (Zn)	kg	0.6 (Zn)	1.1 (Zn)	1.5 (Zn)	2.1 (Zn)	2.5 (Zn)	3.3 (Zn)
壓射衝頭直徑	Injection Plunger Diameter ϕ	mm	45	50	60	65	70	75
系統工作壓力	System Working Pressure	Mpa	16	16	16	16	16	16
空循環周期	Dry Cycle Time	s	≤ 4	≤ 5	≤ 5.5	≤ 7	≤ 7	≤ 7
電機功率	Motor Power	kW	7.5	11	11	15	15	15
坩堝有效容量	Pot Capacity	kg	160	250	380	360	360	720
燃油爐	Fuel Oil Consume	kg/h	3.6	4.8	4.8	4.8	4.8	6.3
電爐	Electric Furnace Power	kW	20	24	24	30	30	42
油箱容量	Tank Capacity	L	250	300	400	400	400	400
機器重量	Machine Weight	kg	3000	3500	4600	5800	6150	7900
機器外形尺寸 (長x寬x高)	Overall Dimensions of Machine (L x W x H)	mm	3400x1640x2100	3400x1450x1880	4220x1700x2020	5200x1630x2350	5600x1630x2580	5950x1750x2600

說明：資料中規格參數如有變更，恕不另行通知。 / All Above Technical Parameters Are Subject To Change Without Prior Notice.

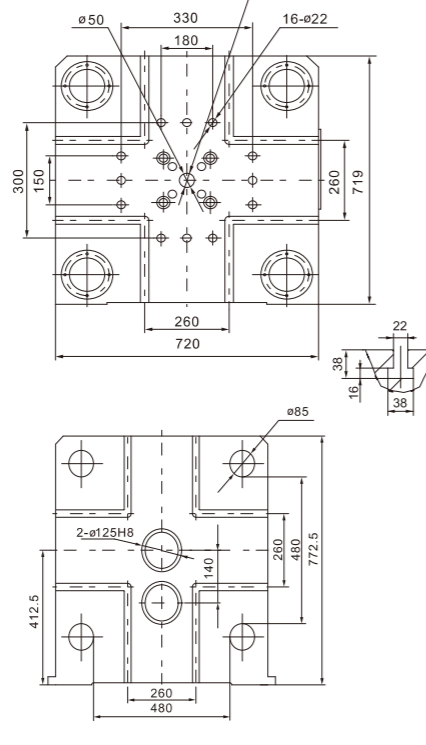
C&M (COLD CHAMBER / MG SERIES) DIE CASTING MACHINE – PLATEN DRAWING

C&M(冷室/鎂合金)精密壓鑄機——模板示意圖

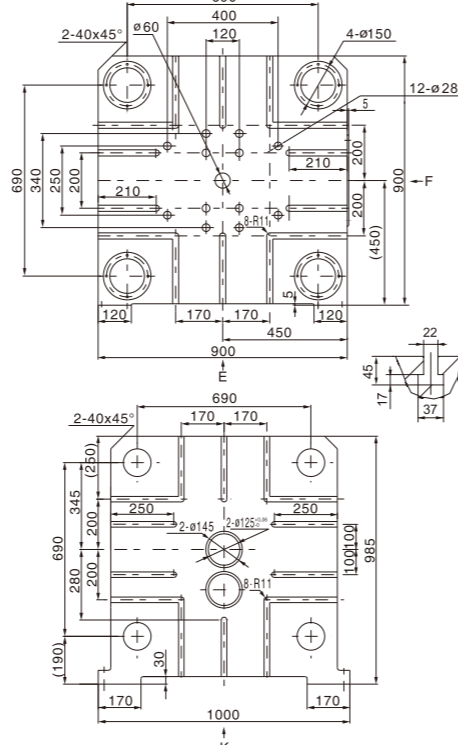
C&M140



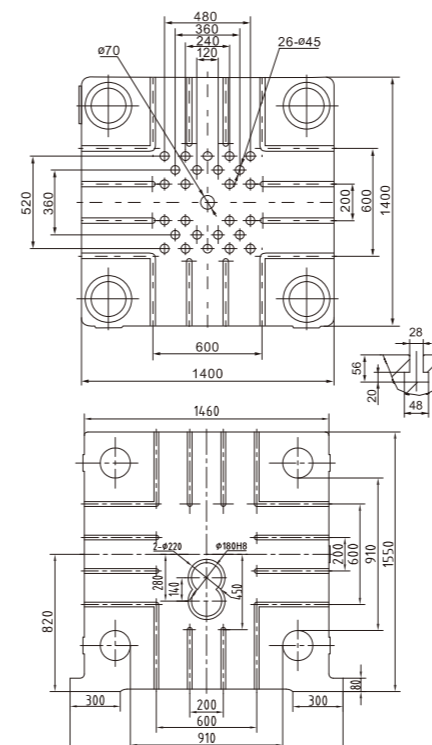
C&M200



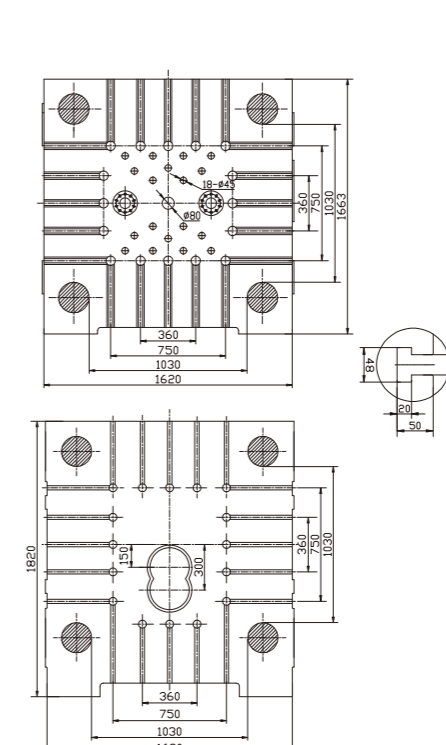
C&M300



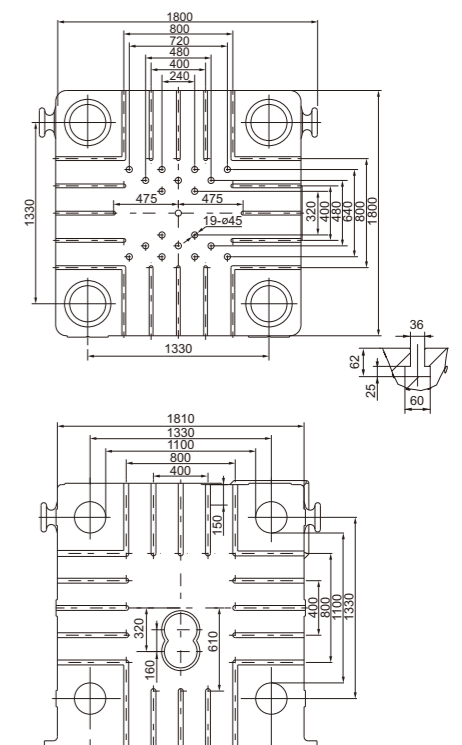
C&M880



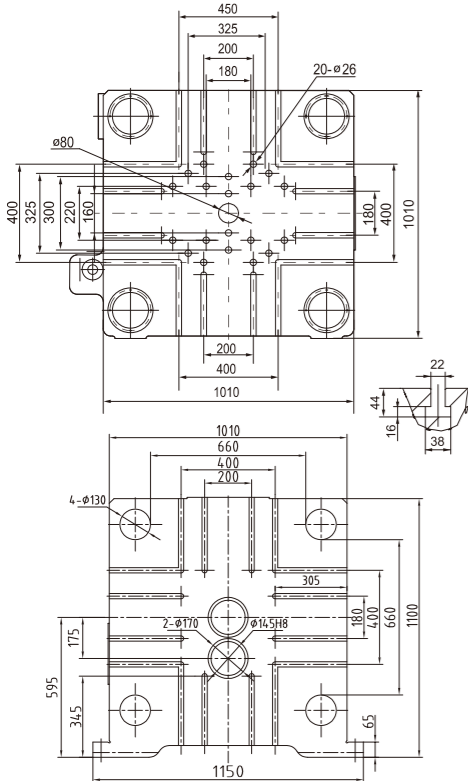
C&M1080



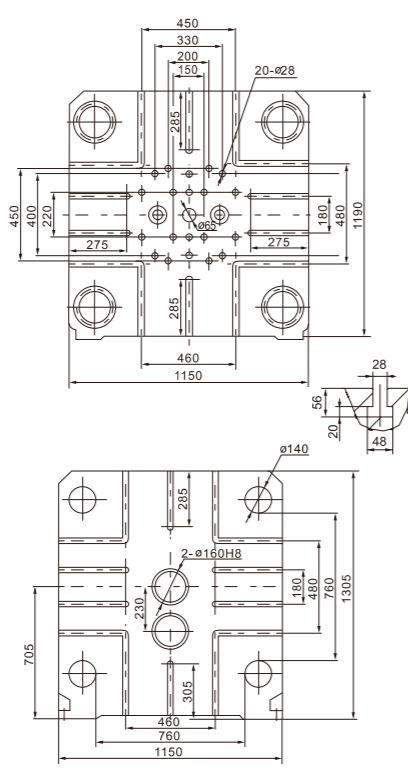
C&M1380



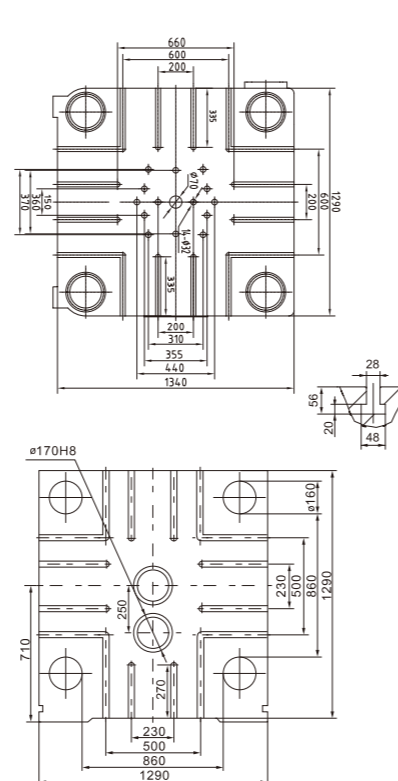
C&M480



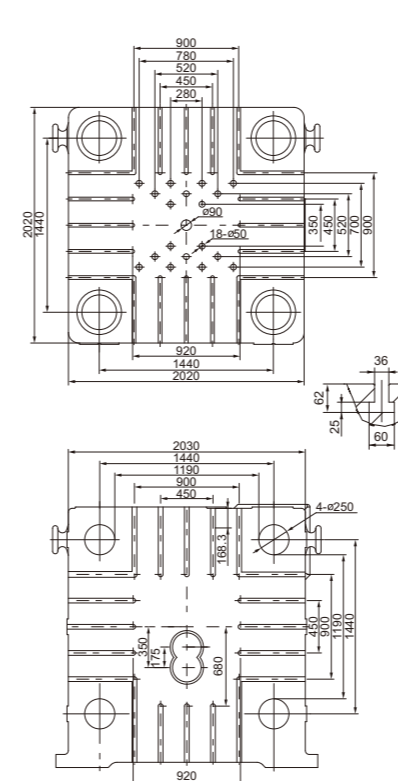
C&M580



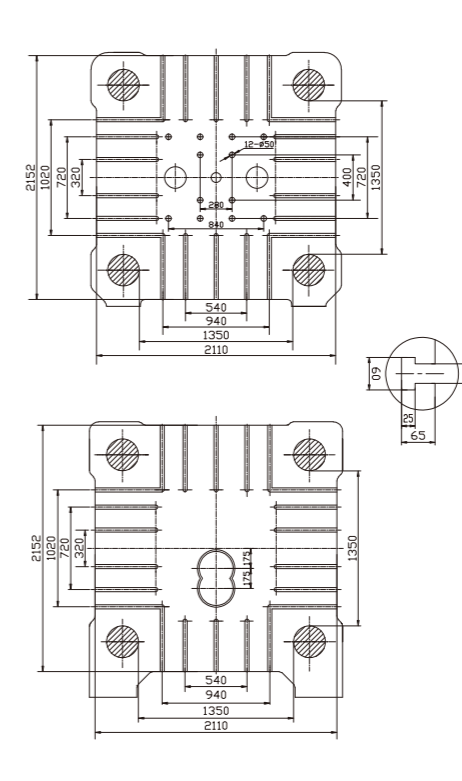
C&M680



C&M1680



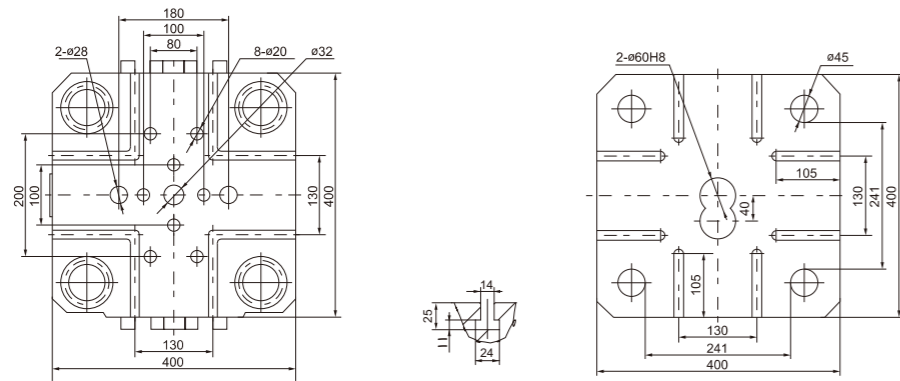
C&M2080



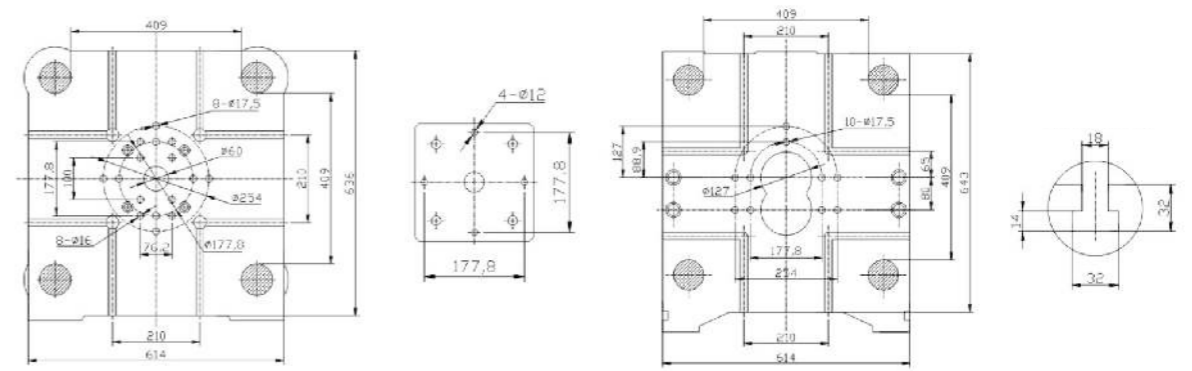
H (HOT CHAMBER SERIES) DIE CASTING MACHINE – PLATEN DRAWING

H款(熱室)精密壓鑄機——模板示意圖

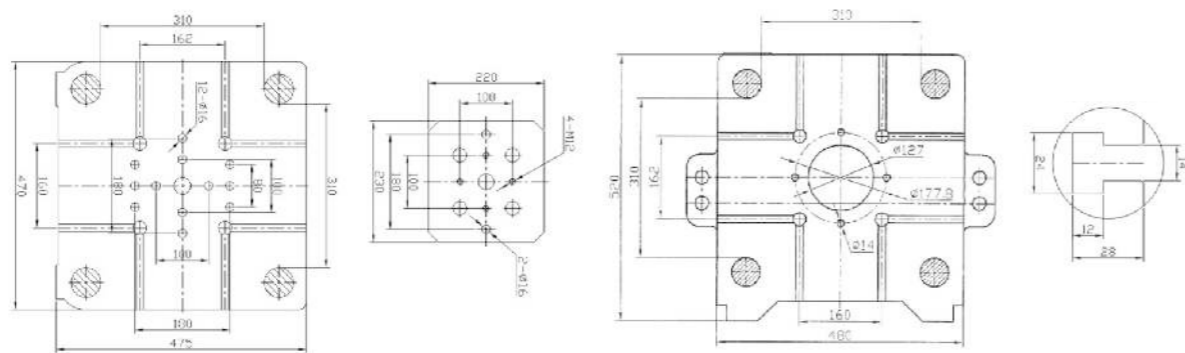
H30



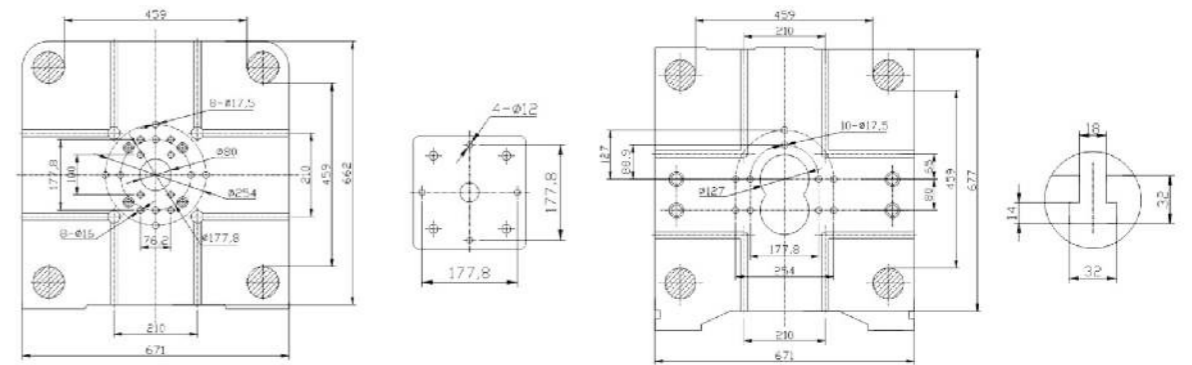
H130



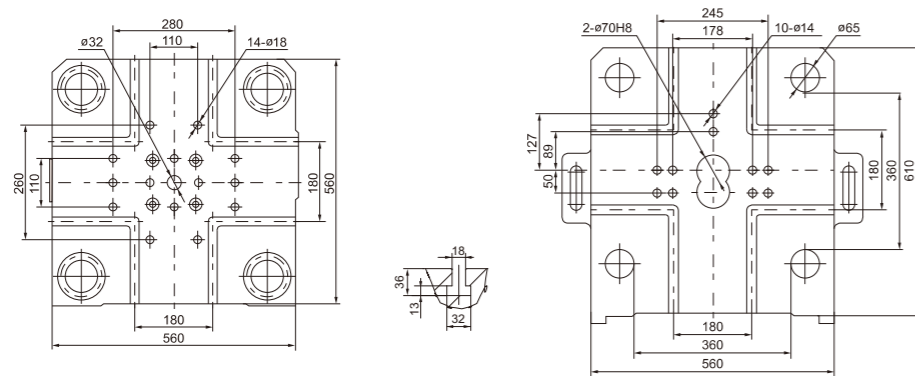
H50



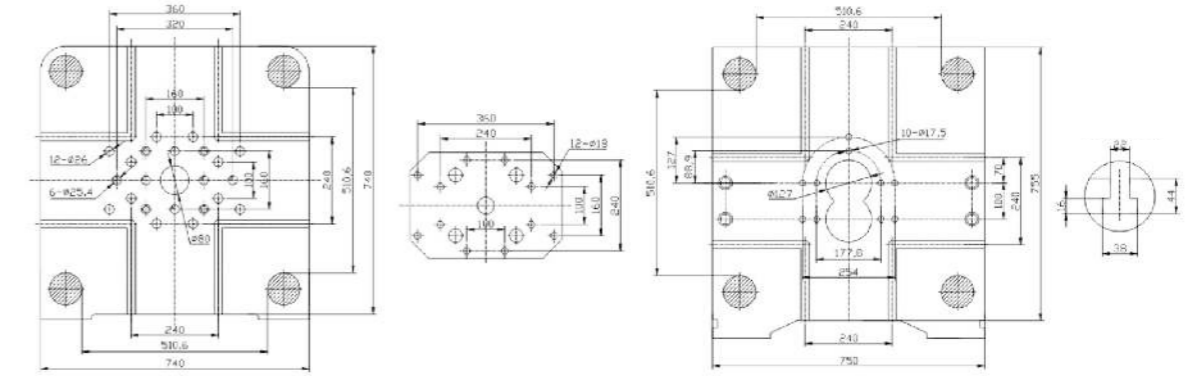
H160



H90



H200



C/M SERIES STANDARD UNIT C/M系列標準裝置

鎖模系統	MOLD CLOSING SYSTEM
高剛性耐磨性球墨合金模板	High rigidity and wear resistance nodular alloy mold platen
高剛性曲肘式斜排五支點鎖模機構	High rigidity five-point support toggle
高拉力合金鋼導柱外層鍍鉻	High tensile alloy steel hard chorm platend tie bar
歐規多點石墨含油襯套	Euro design multi-point oil-bearing graphite bush
高耐磨鋁合金滑腳帶灰塵清掃裝置	High wear resistant aluminum alloy platen support slider with dust clean device
高剛性耐磨性整體式導軌	High rigidity and wear resistant monolithic guide plate
歐規設計頂出模板機構與T型裝置	Euro design eject platen and T slots device
德國進口材料支撐調模板，調模防絞死裝置	Germany import material support mold adjustment platen to prevent adjustment hanged
大空間拉杆間距與模板尺寸	Big space between tie bars and big size mold platen
手動機械式抽拉杆裝置	Mechanical tie bar extraction by manual (1pc)
開合模行程電子尺控制	Die close and die open with lineal transducer control
合模低壓模板功能	Die close with low pressure protection function
液壓馬達驅動調模裝置	Die height adjustment with hydraulic motor
手動調模慢速與快速控制	Mold adjustment by manual with low speed and high speed
液壓頂出多次設定功能	Multi-step eject setting function
頂出行程接近開關控制	Eject stroke control by proximity switch
頂出保持與延時時間設定功能	Eject in and out with time holding and delay setting function
合模前與合模后中子動作選擇功能	Core in and out function select before die close or after die close
多組中子裝置	Multi-group hydraulic cores (up 200t)
中央自動油脂潤滑系統含壓力報警傳感器	Central auto grease lubrication with pressure alarm sensor

壓射系統	INJECTION SYSTEM
四級壓射控制功能	Four-stages injection control function
無浮動活塞設計結構壓射系統	Injection system adopts no floating piston design
最大空壓射速度 $\geq 8\text{m/s}$, 增壓建壓時間 $\leq 15\text{ms}$	Max dry injection speed $\geq 8\text{m/s}$, Pressure building time $\leq 15\text{ms}$
兩種增壓觸發方式, 壓力觸發與位置觸發	There are two intensification activation ways—pressure and position
壓射系統採用歐式拉杆結構, 中心及偏心多位置壓射選擇	Injection system adopted Euro standard design with multi injection position select function
壓射、增壓大流量邏輯閥快速功能	Large flow logic fast speed function of injection and intens
機械式精密手輪調節控制	Mechanical hand wheel control
接近開關控制壓射行程	Injection stroke control by proximity switch

液壓系統	HYDRAULIC SYSTEM
美國威格士高低壓雙聯泵系統	High and low pressure dual-pump system (Vickers)
高響應壓力/流量比例控制系統	High response proportional control system of pressure and flow
可靠耐用的力士樂、威格士液壓元件, 意大利馬努力高壓軟管	Reliable and durable hydraulic components of famous brand (Rextoth, Vickers), Italy Manuli high pressure hose
多級壓力、速度控制功能	Multi-stage pressure and speed control function
系統壓力、壓射壓力、蓄能器氮氣壓力、蓄能器工作壓力指示功能	Pressure indication function of system pressure, injection pressure, accumulator Nitrogen pressure and accumulator intens pressure
油泵自封式吸油過濾裝置	Pump self-styled oil-suction filter
油箱液位顯示與報警功能	Oil level display and alarm function
油溫表顯示功能	Oil temperature indicator
高效油溫冷卻器	High efficiency oil cooling device

控制系統	CONTROL SYSTEM
德國西門子PLC與觸摸屏控制系統	Siemens PLC (S7-200) and touch screen (7") control system
可靠耐用的國外名牌電器元件	Reliable and durable electric components (Schneider, Omron)
歐規CE標準主電源開關與信號連接插頭	Euro CE standard main power switch and signal connecting plug
風扇冷卻電控箱	Electric cabinet with cooling fans
模具參數存儲讀取功能	Mould parameter save and read function
詳細的警報記錄與警示功能	Detail alarm message record and warning function
循環周期與生產管理信息統計功能	Cycle time and Production management statistic function
輸入與輸出信號觸摸屏界面監視系統	Signal input and output monitor on the touch screen
預留多種智能周邊設備的接口與界面功能	Extra connecting plug and interfaces for auxiliary equipments

機器外觀	MACHINE APPEARANCE
非落地式全封閉安全防護門裝置	Non-floor Completely enclosed machine safety cover
機器標準顏色 (灰色, 白色和藍色) 可選擇	Machine standard color (Gray, white and blue) can be changed free

C/M SERIES OPTIONS C/M系列選配裝置

自動衝頭潤滑系統 (油式、顆粒式)	Auto plunger lubrication (oil type or shot bead type)
液壓保險	Hydraulic safety device
電動前、后安全門	Auto electric front side or back side safety door
大空間防護門或者落地式防護門	Big space safety door or floor-standing safety door (big mould)
電箱空調冷卻	Electric cabinet cooling with air conditioner
鎖模油壓顯示功能	Mold locking oil pressure display function
油溫顯示界面與報警功能	Oil temperature interface and alarm function
蓄能器自動泄壓功能	Accumulator auto discharge pressure function
壓射行程電磁尺控制功能	Injection storke control by electromagnetic tranducer
模具局部增壓功能	Mould local pressure intens function
自動調模系統	Auto die height adjustment (no suggest)
伺服閥壓射實時控制系統	Real time control system with servo valves of inject unit and Siemens S7-300 PLC
高精度PPS曲線系統	Position, Pressure & Speed curve display system with 10" screen
10"高分辨率顯示屏	Siemens 10" touch screen (big machine)
自動抽拉杆裝置	Auto tie bar (1pc) extraction device (big machine)
托模裝置	Mould support device (big machine)
快速換模裝置	Mould quick change system (big machine)

H SERIES STANDARD UNIT H系列標準裝置

鎖模系統	MOLD CLOSING SYSTEM
開合模線性位移傳感器控制	Linear position moving sensor control for mold open and close
合模低壓模保功能	Low pressure mold protection function for mold clamping
液壓馬達驅動調模裝置	Hydraulic motor drive mold adjusting mechanism
一組中子(抽、插芯)裝置	One group hydraulic core pulling (pull & insert core) device
活動模板導柱含油軸承	Guide post oiliness bearing of moving mold board
液壓多次及多級行程頂出設定功能	Multi-step and multi-time stroke lift out setting function
自動潤滑系統/故障檢測報警功能	Automatic lubrication system/trouble detect alarming function
產品自動檢出系統	Product automatic detection system

液壓系統	HYDRAULIC SYSTEM
獨特創導快速壓射裝置	Distinguished created quick press-injection mechanism
兩級壓射控制功能	Two-step press-injection control function
中子壓力/流量單獨設定功能	Independent setting function of neutron pressure /flow
高響應壓力/流量比例控制系統	High response pressure/flow proportional control system
蓄能器氮氣壓力指示功能	Nitrogen pressure indication function of accumulator
蓄能器工作壓力指示功能	Work pressure indication function of accumulator

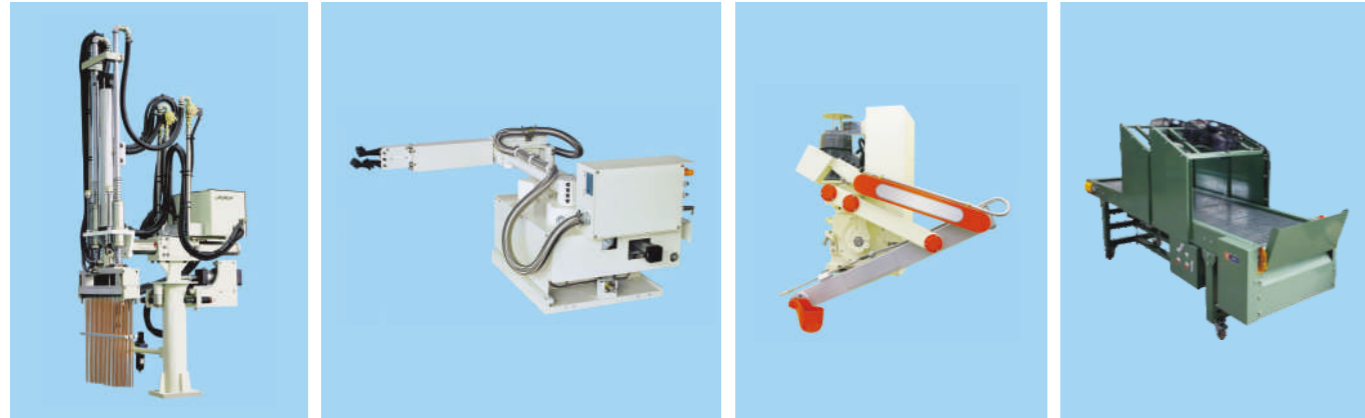
控制系統	CONTROL SYSTEM
工藝參數輸入/輸出動作屏顯示檢索系統	Technical parameter input/output motion screen display retrieval function
成型周期/產品成品統計功能	Forming period/qualified product statistics function
運行異常/狀態警示功能	Abnormal running/condition warning function
機器前、後防護門安全裝置	Safe device of front and rear protection doors of the machine

加熱系統	HEATING FUNCTION
實時壓鑄流道溫度控制	The temperature control of live die casting flow way
壓射溫度保護功能*	Protection function of press-injection function
節能型熔化爐 (可選配燃油、燃氣、電能等加熱裝置)	Energy-saving welter (power, fuel, gas are available)

H SERIES OPTIONS H系列選配裝置

自動模具噴塗系統	Auto sprayer system with four head
自動鑄件推落系統	Auto castings sweeper down system
天然氣熔化爐	Gas melting furnace

AUXILIARY DEVICES 配套輔機



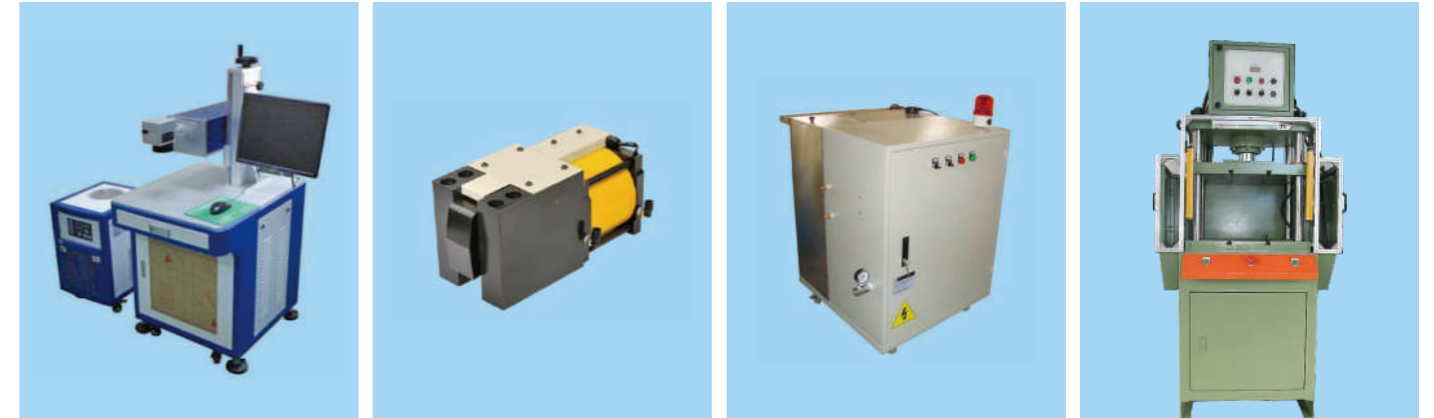
自動噴霧機
Auto sprayer

自動取出機
Auto extractor

自動給湯機
Auto ladler

自動傳輸帶
Auto conveyer

AUXILIARY DEVICES 配套輔機



打標機
Marking machine

夾模器
Fast die clamping device

配比機
Mixer

切邊機
Trimming machine



真空機
Vacuum machine

融化爐
Melting furnace

油壓切邊機
Hydraulic trimming machine

模溫機
Mould temperature controller



離型劑混合機
Release agent mixer

冷水機
Cooling chiller

機器人
Robot

取出噴霧一體機 (熱式)
Sprayer extractor combine (Hot chamber)



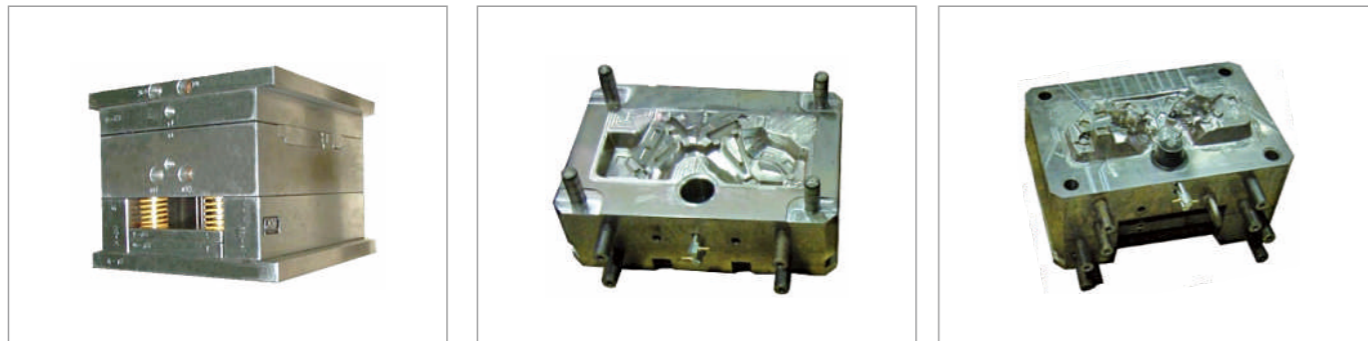
合模機
Die spotting press

DIE CASTING MOULDS 壓鑄模具

汽車配件模具
Auto parts mould



發動機外殼模具
Car starter engine
housing mould



DIE CASTING MOULDS 壓鑄模具

通訊部件模具
Communication
components mould



LED路灯压铸模具
LED street light
die casting mould



日用品壓鑄模具
Commodity
die casting mould

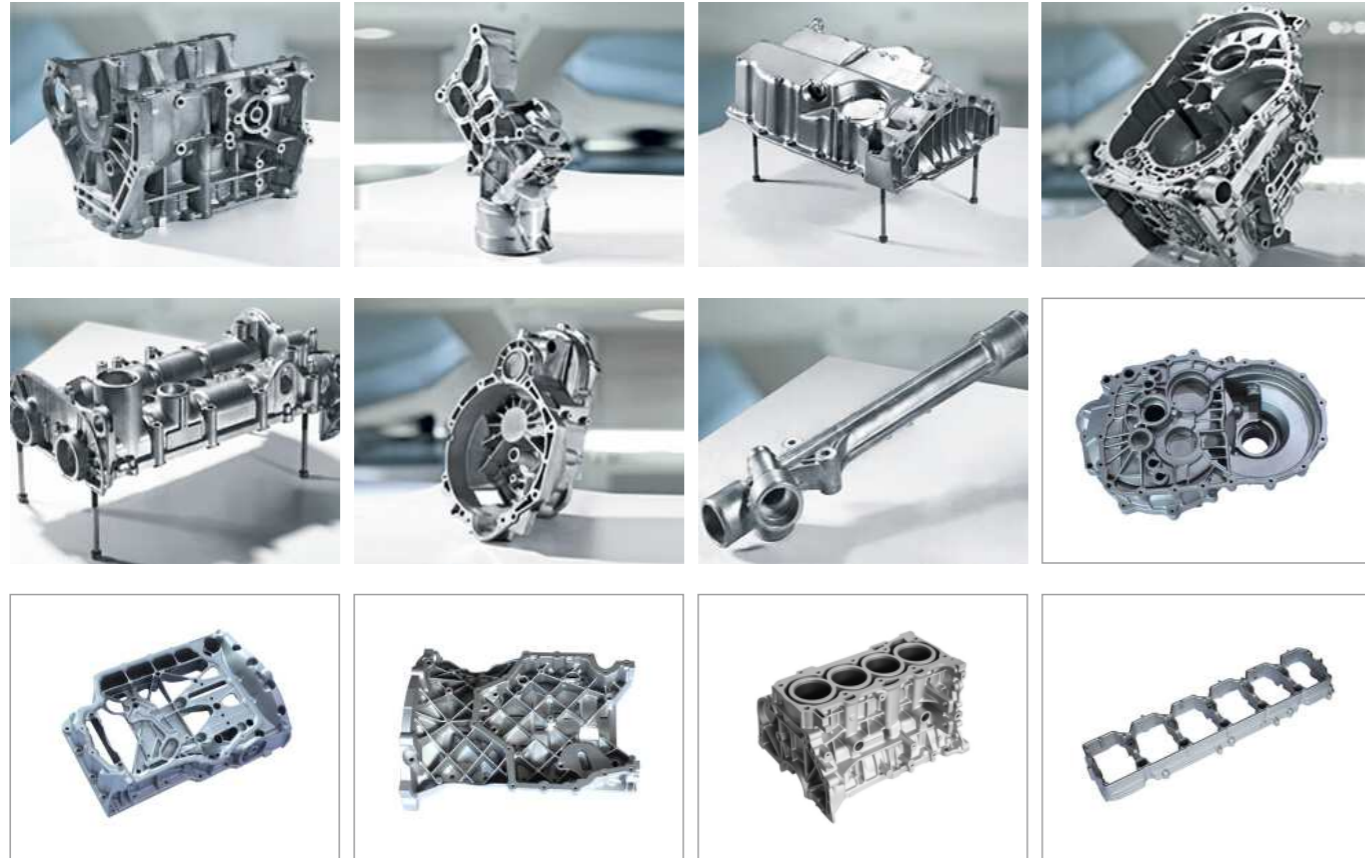


通機產品模具
General mechanical
components mould



DIE CASTING PRODUCTS 壓鑄產品

汽配壓鑄產品
Die casting products
of auto parts



發動機外殼鋁壓鑄件
Aluminum die casting car starter
engine housing components

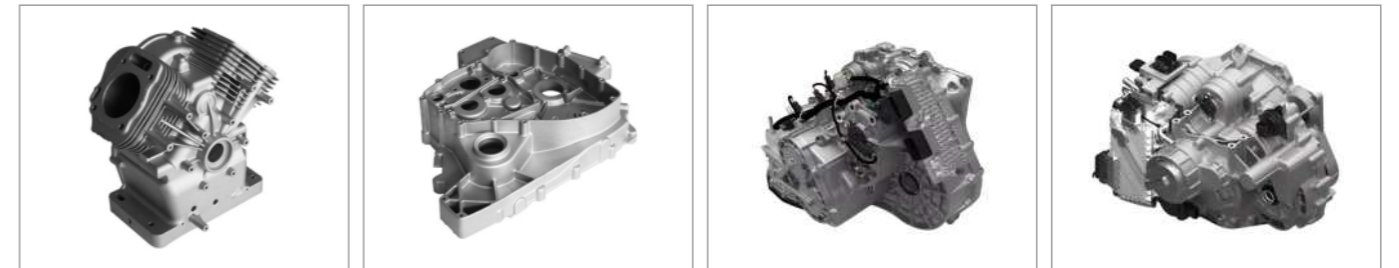


DIE CASTING PRODUCTS 壓鑄產品

通訊部件壓鑄產品
Die casting products of
communication components



通機壓鑄產品
Die casting product of general
mechanical components



精密鋁材舷外發動機壓鑄
Precision aluminum material
outboard engine die casting



電力附件鋁壓鑄件
Aluminium die casting parts
electrical power accessories

